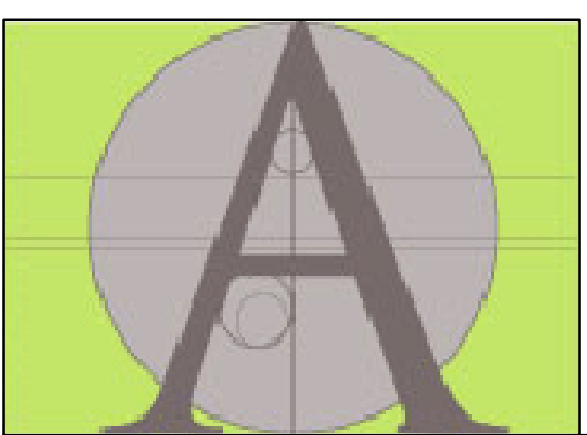


**FLOOR PLAN**

BUILDING AREA DATA:	
LIVING:	2863 SQ. FT.
FRONT COVERED PATIO:	299 SQ. FT.
REAR COVERED PATIO:	260 SQ. FT.
STOOPS:	15 SQ. FT.
GARAGE:	544 SQ. FT.
TOTAL COVERED/UNCOVERED FLOOR AREA:	3921 SQ. FT.



87 Loop 150 W.  
 Bastrop, TX 78602  
 PHONE: (512) 589.3523  
 www.acadianhomestexas.com

**ACADIAN HOMES**  
 WE HAVE A PASSION FOR QUALITY, AFFORDABLE, ENERGY-EFFICIENT TEXAS CUSTOM HOMES

**THE LAURELWOOD**  
 2863 sq. ft.

PROJECT NO: 403  
 DRAWN BY: RP  
 DATE: 05/09/2013  
This plan shows design with the structural design and framing concepts are subject to change without notice. All dimensions are in feet and inches unless otherwise noted. © 2013 PD&D



896 SAINT DELIGHT RD., PAIGE, TX 78659  
 PHONE: (512) 507-4027 WWW.PD-D.COM